

LIVING FIRE
by SPARTHERM®



STOVES TRICO

Fire love. For a lifetime.



TRICO

U-shape for fire visibility
from three sides



The Trico stove is all about maximising fire visibility. "Tri" means three. The combustion chamber is surrounded by three large panes of glass. They offer a perfect view of the flickering flames from any point in the room. To create a unique fire experience, the stove is available with black fireclay, allowing the fire to shine even more brightly in front of a dark background. From a technical perspective, the Trico models excel thanks to infrared-coated combustion chamber glazing for a reduced radiation distance, high combustion chamber temperatures and reduced soot build-up. Available in two sizes as Trico S and Trico L.



Trico S

COLOURS



Nero



Titanium



Pearl



White



Light grey



Turquoise



Magnolia



Nickel



Metallic
auburn



Grey blue



Copper



Trico L

SMART FIREPLACE ASSISTANCE FUNCTION



S-Thermatik NEO
(combustion control)

VARIANTS

Trico S

A+

4.5 - 7.8 kW

6.0 kW

1495 mm

Trico L

A+

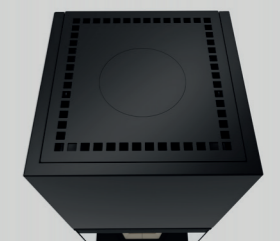
4.5 - 7.8 kW

6.0 kW

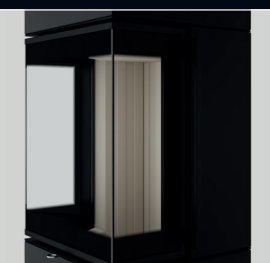
1653 mm



BENEFITS



40 x 40 cm basic shape



U-shaped glass

LIVING FIRE

by SPARTHERM®

SPECIALIST DEALERS



www.facebook.com/Spartherm

www.instagram.com/spartherm

www.youtube.com/sparthermgermany

www.spartherm.com

